








Welcome & Orientation California Hub and Spoke System SOR 3

January 31, 2023, 12:00–1:00 p.m. PT



Housekeeping

-  **This event is being recorded:** Audio is now broadcasting 01
-  **Audio is provided through your computer speakers or headphones:** Your line is automatically muted. 02
-  **If you have issues with audio:** Please message the tech team in the chat, we will assist you. 03
-  **Live Captioning is Available:** Click the CC Live Transcription button to show or hide captions. 04
-  **Live Transcript:** You may also click the link dropped in the chat and view the transcript in a separate window. 05
-  **Chat:** Click the Chat icon to open the Chat panel. We will be sharing links throughout the presentation. 06
-  **Need help or have questions for our presenters?** Please type in the Q&A box! 07



Welcome & Orientation California Hub and Spoke System SOR 3

January 31, 2023, 12:00–1:00 p.m. PT

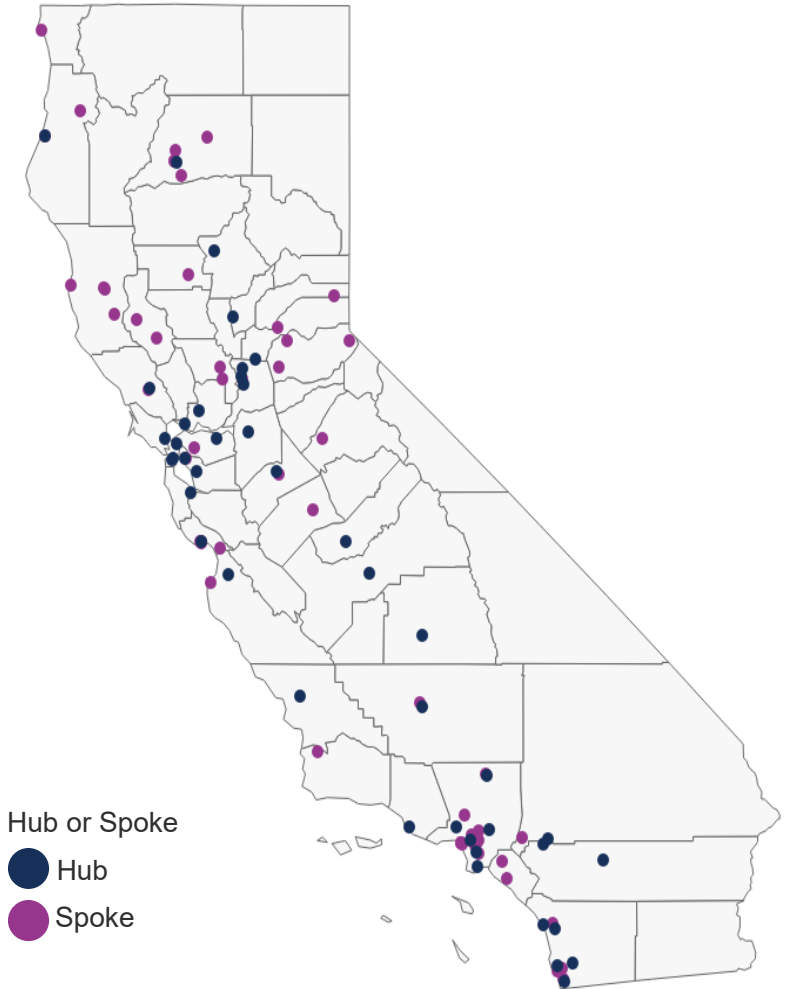


WELCOME and CONGRATULATIONS!

105 Grantees Awarded
61 Spokes
and
44 Hubs
were awarded
State Opioid Response (SOR) 3 funds.

54 New sites that were not part of SOR 2:
WELCOME!

Congratulations on your awards!



Eligibility Criteria and Period of Performance

Eligibility Criteria

1. Must be a California-based Medi-Cal provider
2. Must be physically located in California and able to provide evidence of delivering services in the state

Period of Performance

January 1, 2023 – June 30, 2024

California Department of Health Care Services (DHCS) Team



Jessica Page
Program Manager



Vicki Watkins
Unit Chief



Latoya Deon
Assistant Program
Manager



Jessica Nasello
Assistant Program
Manager

Contract Flow Down

Federal SAMHSA funding to
DHCS



DHCS to Advocates for
Human Potential, Inc. (AHP)



AHP to Subcontractors – All
H&SS Grantees

**ALL must adhere to federal
requirements.**

DHCS and MAT expansion
projects must adhere to [45
CFR Part 75](#).



MAT expansion projects must
adhere to DHCS project
requirements.



MAT expansion projects must
adhere to AHP contractual
requirements.



AHP Is the Administrative Entity | What Is an Administrative Entity (AE)?

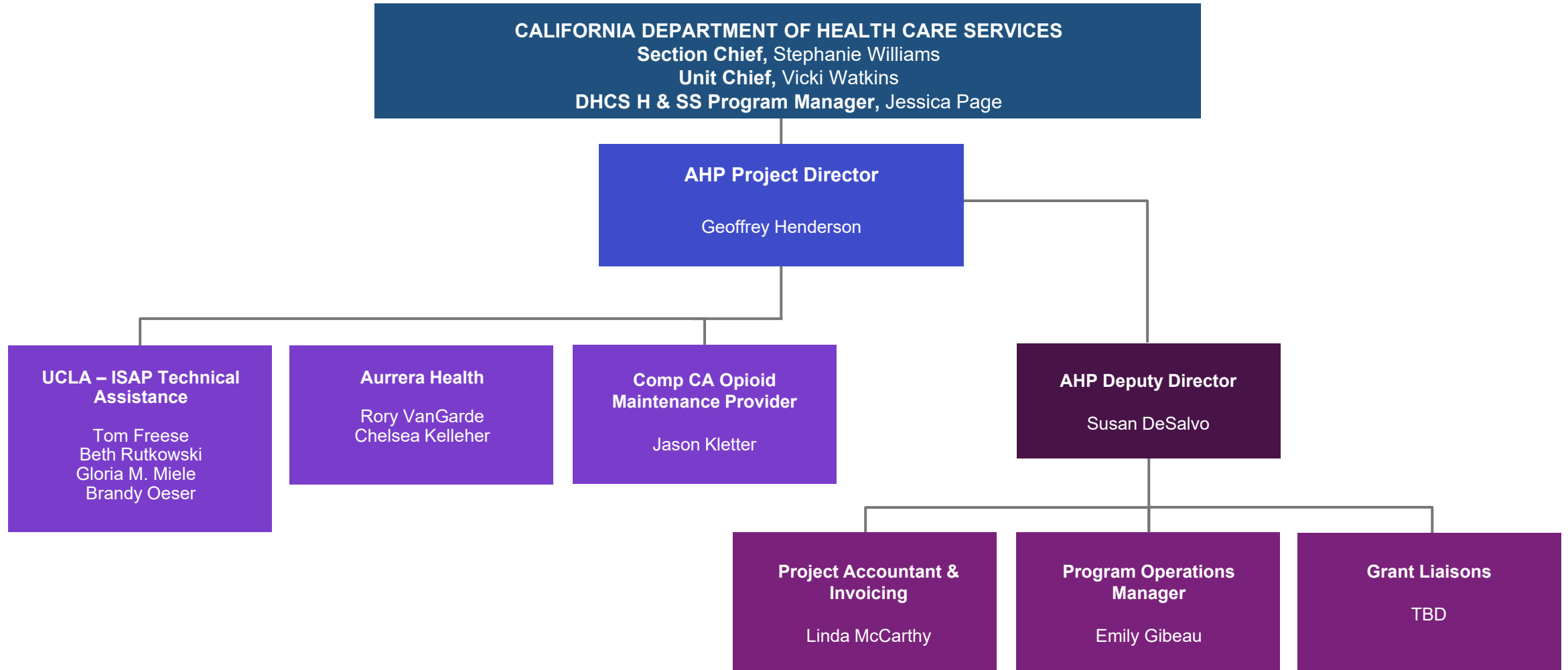
Nutshell Answer: Does Contracting & Payment

- The administrative entity (AE) has a contract with DHCS and a subcontract with **each** of the Hub sites and Spoke sites, as well as project partners UCLA-ISAP, Aurrera, and COMP.
- The **AE (AHP) will oversee funding on behalf of DHCS, subject to their approval.**
 - Hubs will not contract with Spokes, but Hubs and Spokes should continue to collaborate and network!
- **Invoice submission and payment will be quarterly, to AHP.**
- **Payments will remain contingent upon successful completion of data reporting and quarterly completion of program deliverables per scope of work (SOW).**



SOR 3 Hub and Spoke Project Leads

Organizational Chart



Your Support Specialist Teams

"Success is not just about what you accomplish. It is about what you do that can inspire others!" — Unknown



AHP and Partners to Support Your Success!

Advocates for Human Potential (Lead)

- Contracting with existing Hubs and Spokes
- Overseeing invoicing and payment
- Providing administrative technical assistance (TA)
- Monitoring data submission to UCLA and Aurrera for evaluation and GPRA, respectively



UCLA ISAP

- Providing clinical training and TA
- Collecting patient treatment data (under separate contract with DHCS, coordinated with the AE)



Aurrera Health Group

- Providing webinar support and administrative TA
- Collecting GPRA data on ongoing basis (under separate contract with DHCS, coordinated with the AE)



California Opioid Maintenance Providers (COMP)

- Providing training, TA, and education



Advocates for Human Potential (AHP) - Lead



Geoffrey Henderson
Project Director



Susan DeSalvo
Deputy Project Director

- Your AHP SOR3 H&SS Directors have over 20 years of experience in health care, with expertise in treatment, substance use disorder (SUD), recovery, and behavioral health.
- AHP has worked in the health and human services field for more than 35 years, with expertise in recovery support, SUD and treatment, mental health, and homelessness interventions.
- AHP has served on hundreds of projects in dozens of states, including, in California as an AE, implementing the Mentored Internship Program (MIP) and the California Youth Opioid Response (YOR California, with the California Institute for Behavioral Health Solutions).
- AHP's California office is in Pasadena.



Emily Gibeau
Project Operations Manager (starting 2-14-23)



2 Grantee Liaisons (TBD)



UCLA Integrated Substance Abuse Programs (UCLA ISAP)



Thomas Freese, Ph.D.
Co-Principal Investigator



Beth Rutkowski, M.P.H.
Co-Principal Investigator



Gloria M. Miele, Ph.D.
Program Director



Brandy Oeser, M.P.H.
Project Director

- ISAP has been providing evidence-based training to substance use and behavioral health treatment providers in California and beyond for more than 20 years.
- ISAP provided training and TA to SOR 1 and SOR 2 California Hub and Spoke system.
- Online and in-person learning activities for SOR 3 will include quarterly webinars and Learning Collaboratives, monthly Project ECHO clinics, and direct clinician support.
 - **Save the Date: Wednesday, March 8, 11:30–1:00 p.m.**
- Topic areas will include addressing racial disparities, family engagement, peer-to-peer support, choosing the right medications, telehealth, and more.
- There will be an increased emphasis on clinical examples to deepen shared learning.
- [Visit the ISAP Website](#) with H&SS project and other training resources.



UCLA Data Reporting



Left to right: Aida Santos, Patient Interview Coordinator; Eva Vazquez, Data Report Coordinator; Liliana Gregorio, Tracking & Locating Coordinator; Kendall Darfler, Evaluation Project Director

- Patient and program data will be reported on a quarterly basis into the SOR Data Portal (Qualtrics platform).
- The UCLA evaluation team will send reminders to designated program staff, along with reporting due dates and the unique data portal link prepared for SOR 3. The process will remain like the one used for SOR 2.
- Items on the SOR 3 data reporting form have been revised based on SAMHSA and DHCS needs and based on our experience during SOR 1 and SOR 2.
- Training will be offered on H&SS data measures, reporting requirements, and overall navigation of the portal.
- Liliana Gregorio is the primary contact at UCLA for your questions related to the Data portal under SOR 3 (lgregorio@mednet.ucla.edu)



Aurrera Health Group GPRA Reporting



Chelsea Kelleher, Deputy Director, Behavioral Health



Rory VanGarde, Senior Policy Consultant, Integrated Care

- Aurrera Health Group manages the GPRA data submission process for the SOR grant. This includes H&SS as well as several other projects providing direct treatment services.
- Grantees will conduct GPRA surveys at intake, 6 months, and discharge using the SAMHSA Client Outcomes tool. Surveys will be submitted through the REDcap data portal at- [REDCap.link/collectGPRADData](https://redcap.aurrerahealthgroup.com/collectGPRADData). Please note—this link is for *intake* surveys only. Each site will have a page (to be listed in the handbook) where they can access *follow-up* and *discharge* surveys.
- Instructions and resources: <https://californiamat.org/resource/gpra-resources-for-sor-contractors/>. This website has the handbook, training videos, consent forms, a GPRA tracking sheet, and FAQs, as well as resources from SAMHSA.
- GPRA training webinar will be held February 15, 2023, at 12:00 noon—SAVE THE DATE.



California Opioid Maintenance Providers (COMP)



Jason Kletter, Ph.D., President
BayMark Health Services

- Promotes access to opioid use disorder treatment, using medication and psychosocial intervention
- Distributes information about medications for opioid use disorder (MOUD), reducing stigma, dispelling myths, and fostering understanding and acceptance
- Encourages clinicians, administrators, and policy makers to use evidence-based interventions
- Advocates for patients who use MOUD as a tool in recovery
- Will be assisting with providing webinars, Learning Collaboratives, and affinity groups

Contracts and Scope of Work

AHP is dedicated to initiating and executing your grantee contract and SOW as soon as possible.



Funding Allocation

- California Hub and Spoke SOR 3 RFA application had an overwhelming response.
- There were limited funds to distribute.
- Award amounts reflect the RFA's goal to expand access to MOUD, support marginalized populations, and provide “funding of last resort.”
- More sites were given awards in SOR 3 to accomplish the goal of expanding access.
 - Expansion included larger geographical regions in CA.
- AHP and DHCS did our best to provide as much funding as possible with a limited budget.
- Those in the lower tier of funded awards —please stand by for possible funding adjustments. We will be following up with each organization individually, as applicable.

Contracts

- Your contract will be sent to you during the first quarter of the grant period.
- AHP is requesting that you review and execute within 6 weeks of receiving your contract.
- AHP/DHCS will provide a Template of a Scope Of Work (SOW) prior to the contract.
- Contract must be accompanied by an SOW when submitted to AHP.



Instructions for SOW Submission

An SOW template will be provided with your contract. Please follow these instructions to accurately complete this form. AHP will be available to help you with the SOW.

1 Awardee Name: Enter the legal name of your organization and/or clinical site if appropriate.

2 Header: This is standard and should not be changed.

1 Awardee Name:

2 SOW and Payment Schedule: 18 Months

Quarter	Deliverable Description	Amount	Due
Quarter 1 7545.01	Submission of revised SOW and budget to AHP		3/31/23
Quarter 1 7545.01	Implementation Plan (1/1/23 – 3/31/23): <ul style="list-style-type: none"> Develop Implementation Plan draft for AHP review Update Implementation Plan with feedback from AHP and send for final approval Implementation Plan created Treatment and Recovery Services (1/1/23 – 3/31/23): <ul style="list-style-type: none"> Deliver direct Treatment and Recovery Services to patients utilizing MAT Collect GPRA, UCLA and AHP data as part of Treatment and Recovery service requirements 1st Reporting to AHP (1/1/23 – 3/31/23): <ul style="list-style-type: none"> Submission of program data to UCLA ISAP evaluations team on quarterly basis. Submit data to AHPs online portal Quarterly. Data collection and performance measure will include all requested information per the SOW Participation in AHP learning collectives, webinars, and coaching call 		3/31/23
Quarter 2 7545.01	Treatment and Recovery Services (4/01/23 – 06/30/23): <ul style="list-style-type: none"> Deliver direct Treatment and Recovery Services to patients utilizing MAT and CM Collect GPRA data as part of Treatment and Recovery service requirements Incentives for patients graduating from one Phase to next Phase 2nd Reporting to AHP (1/1/23 – 3/31/23): <ul style="list-style-type: none"> Submission of program data to UCLA ISAP evaluations team on quarterly basis. Submit data to AHPs online portal Quarterly. Data collection and performance measure will include all requested information per the SOW Participation in AHP learning collectives, webinars, and coaching call 		6/30/23
Quarter 3 7545.01	Treatment and Recovery Services (07/01/23 – 09/30/23): <ul style="list-style-type: none"> Deliver direct Treatment and Recovery Services to patients utilizing MAT and CM Collect GPRA data as part of Treatment and Recovery service requirements Incentives for patients graduating from one Phase to next Phase 3rd Reporting to AHP (1/1/23 – 3/31/23): <ul style="list-style-type: none"> Submission of program data to UCLA ISAP evaluations team on quarterly basis. Submit data to AHPs online portal Quarterly. Data collection and performance measure will include all requested information per the SOW Participation in AHP learning collectives, webinars, and coaching call 		9/30/23
Quarter 4 7545.01	Treatment and Recovery Services (10/01/23 – 12/31/23): <ul style="list-style-type: none"> Deliver direct Treatment and Recovery Services to patients utilizing MAT and CM Collect GPRA data as part of Treatment and Recovery service requirements Incentives for patients graduating from one Phase to next Phase 4th Reporting to AHP (1/1/23 – 3/31/23): <ul style="list-style-type: none"> Submission of program data to UCLA ISAP evaluations team on quarterly basis. Submit data to AHPs online portal Quarterly. Data collection and performance measure will include all requested information per the SOW Participation in AHP learning collectives, webinars, and coaching call 		12/31/23
Total for 2023			

SOW Instructions

3 **Quarter column:** This is standard and should not be changed.

4 **Deliverables column:** All lines items in your SOW are standard and should not be changed.

Quarter	Deliverable Description	Amount	Due
Quarter 1 7545.01	Submission of revised SOW and budget to AHP		3/31/23
Quarter 1 7545.01	Implementation Plan (1/1/23 – 3/31/23): <ul style="list-style-type: none"> Develop Implementation Plan draft for AHP review Update Implementation Plan with feedback from AHP and send for final approval Implementation Plan created Treatment and Recovery Services (1/1/23 – 3/31/23): <ul style="list-style-type: none"> Deliver direct Treatment and Recovery Services to patients utilizing MAT Collect GPRA, UCLA and AHP data as part of Treatment and Recovery service requirements 1st Reporting to AHP (1/1/23 – 3/31/23): <ul style="list-style-type: none"> Submission of program data to UCLA ISAP evaluations team on quarterly basis. Submit data to AHPs online portal Quarterly. Data collection and performance measure will include all requested information per the SOW Participation in AHP learning collectives, webinars, and coaching call 		3/31/23
Quarter 2 7545.01	Treatment and Recovery Services (4/01/23 – 06/30/23): <ul style="list-style-type: none"> Deliver direct Treatment and Recovery Services to patients utilizing MAT and CM Collect GPRA data as part of Treatment and Recovery service requirements Incentives for patients graduating from one Phase to next Phase 2nd Reporting to AHP (1/1/23 – 3/31/23): <ul style="list-style-type: none"> Submission of program data to UCLA ISAP evaluations team on quarterly basis. Submit data to AHPs online portal Quarterly. Data collection and performance measure will include all requested information per the SOW Participation in AHP learning collectives, webinars, and coaching call 		6/30/23
Quarter 3 7545.01	Treatment and Recovery Services (07/01/23 – 09/30/23): <ul style="list-style-type: none"> Deliver direct Treatment and Recovery Services to patients utilizing MAT and CM Collect GPRA data as part of Treatment and Recovery service requirements Incentives for patients graduating from one Phase to next Phase 3rd Reporting to AHP (1/1/23 – 3/31/23): <ul style="list-style-type: none"> Submission of program data to UCLA ISAP evaluations team on quarterly basis. Submit data to AHPs online portal Quarterly. Data collection and performance measure will include all requested information per the SOW Participation in AHP learning collectives, webinars, and coaching call 		9/30/23
Quarter 4 7545.01	Treatment and Recovery Services (10/01/23 – 12/31/23): <ul style="list-style-type: none"> Deliver direct Treatment and Recovery Services to patients utilizing MAT and CM Collect GPRA data as part of Treatment and Recovery service requirements Incentives for patients graduating from one Phase to next Phase 4th Reporting to AHP (1/1/23 – 3/31/23): <ul style="list-style-type: none"> Submission of program data to UCLA ISAP evaluations team on quarterly basis. Submit data to AHPs online portal Quarterly. Data collection and performance measure will include all requested information per the SOW Participation in AHP learning collectives, webinars, and coaching call 		12/31/23
Total for 2023			

SOW Instructions

5 **Amount column:** Grantees are allowed to receive 50% of their first quarter total as soon as their subcontract is executed. This amount should be put in the top row. The remaining 50% should be invoiced upon completion of the first quarter, in the second row.

All subsequent quarters should contain the amount planned per quarter—typically 1/6th of the total award (across six quarters), but this is up to each site to decide how they want to split up the funding.

6 **Due column:** This is standard and should not be changed.

5 6

Quarter	Deliverable Description	Amount	Due
Quarter 1 7545.01	Submission of revised SOW and budget to AHP		3/31/23
Quarter 1 7545.01	Implementation Plan (1/1/23 – 3/31/23): <ul style="list-style-type: none"> Develop Implementation Plan draft for AHP review Update Implementation Plan with feedback from AHP and send for final approval Implementation Plan created Treatment and Recovery Services (1/1/23 – 3/31/23): <ul style="list-style-type: none"> Deliver direct Treatment and Recovery Services to patients utilizing MAT Collect GPRA, UCLA and AHP data as part of Treatment and Recovery service requirements 1st Reporting to AHP (1/1/23 – 3/31/23): <ul style="list-style-type: none"> Submission of program data to UCLA ISAP evaluations team on quarterly basis. Submit data to AHPs online portal Quarterly. Data collection and performance measure will include all requested information per the SOW Participation in AHP learning collectives, webinars, and coaching call 		3/31/23
Quarter 2 7545.01	Treatment and Recovery Services (4/01/23 – 06/30/23): <ul style="list-style-type: none"> Deliver direct Treatment and Recovery Services to patients utilizing MAT and CM Collect GPRA data as part of Treatment and Recovery service requirements Incentives for patients graduating from one Phase to next Phase 2nd Reporting to AHP (1/1/23 – 3/31/23): <ul style="list-style-type: none"> Submission of program data to UCLA ISAP evaluations team on quarterly basis. Submit data to AHPs online portal Quarterly. Data collection and performance measure will include all requested information per the SOW Participation in AHP learning collectives, webinars, and coaching call 		6/30/23
Quarter 3 7545.01	Treatment and Recovery Services (07/01/23 – 09/30/23): <ul style="list-style-type: none"> Deliver direct Treatment and Recovery Services to patients utilizing MAT and CM Collect GPRA data as part of Treatment and Recovery service requirements Incentives for patients graduating from one Phase to next Phase 3rd Reporting to AHP (1/1/23 – 3/31/23): <ul style="list-style-type: none"> Submission of program data to UCLA ISAP evaluations team on quarterly basis. Submit data to AHPs online portal Quarterly. Data collection and performance measure will include all requested information per the SOW Participation in AHP learning collectives, webinars, and coaching call 		9/30/23
Quarter 4 7545.01	Treatment and Recovery Services (10/01/23 – 12/31/23): <ul style="list-style-type: none"> Deliver direct Treatment and Recovery Services to patients utilizing MAT and CM Collect GPRA data as part of Treatment and Recovery service requirements Incentives for patients graduating from one Phase to next Phase 4th Reporting to AHP (1/1/23 – 3/31/23): <ul style="list-style-type: none"> Submission of program data to UCLA ISAP evaluations team on quarterly basis. Submit data to AHPs online portal Quarterly. Data collection and performance measure will include all requested information per the SOW Participation in AHP learning collectives, webinars, and coaching call 		12/31/23
Total for 2023			

SOW Instructions

7 **Total lines:** Please tally year 1, the 18-month period.

8 **Grand Total line:** Please tally total for the 18 months and enter in Grand Total line. This total must match the Notice of Award amount.

Deliverable	Deliverable Description	Amount	Delivery
Quarter 5 7545.01	Treatment and Recovery Services (01/1/24 – 3/31/24): <ul style="list-style-type: none"> Deliver direct Treatment and Recovery Services to patients utilizing MAT and CM Collect GPRA data as part of Treatment and Recovery service requirements Incentives for patients graduating from one Phase to next Phase 5th Reporting to AHP (1/1/23 – 3/31/23): <ul style="list-style-type: none"> Submission of program data to UCLA ISAP evaluations team on quarterly basis. Submit data to AHPs online portal Quarterly. Data collection and performance measure will include all requested information per the SOW Participation in AHP learning collectives, webinars, and coaching call 		3/31/24
Quarter 6 7545.01	Treatment and Recovery Services (04/01/24 – 06/30/24): <ul style="list-style-type: none"> Deliver direct Treatment and Recovery Services to patients utilizing MAT and CM Collect GPRA data as part of Treatment and Recovery service requirements Incentives for patients graduating from one Phase to next Phase 6th Reporting to AHP (1/1/23 – 3/31/23): <ul style="list-style-type: none"> Submission of program data to UCLA ISAP evaluations team on quarterly basis. Submit data to AHPs online portal Quarterly. Data collection and performance measure will include all requested information per the SOW Participation in AHP learning collectives, webinars, and coaching call 		6/30/24
18 MONTH Total			
Grand Total			

Quarter	Deliverable Description	Amount	Due
Quarter 1 7545.01	Submission of revised SOW and budget to AHP		3/31/23
Quarter 1 7545.01	Implementation Plan (1/1/23 – 3/31/23): <ul style="list-style-type: none"> Develop Implementation Plan draft for AHP review Update Implementation Plan with feedback from AHP and send for final approval Implementation Plan created Treatment and Recovery Services (1/1/23 – 3/31/23): <ul style="list-style-type: none"> Deliver direct Treatment and Recovery Services to patients utilizing MAT Collect GPRA, UCLA and AHP data as part of Treatment and Recovery service requirements 1st Reporting to AHP (1/1/23 – 3/31/23): <ul style="list-style-type: none"> Submission of program data to UCLA ISAP evaluations team on quarterly basis. Submit data to AHPs online portal Quarterly. Data collection and performance measure will include all requested information per the SOW Participation in AHP learning collectives, webinars, and coaching call 		3/31/23
Quarter 2 7545.01	Treatment and Recovery Services (4/01/23 – 06/30/23): <ul style="list-style-type: none"> Deliver direct Treatment and Recovery Services to patients utilizing MAT and CM Collect GPRA data as part of Treatment and Recovery service requirements Incentives for patients graduating from one Phase to next Phase 2nd Reporting to AHP (1/1/23 – 3/31/23): <ul style="list-style-type: none"> Submission of program data to UCLA ISAP evaluations team on quarterly basis. Submit data to AHPs online portal Quarterly. Data collection and performance measure will include all requested information per the SOW Participation in AHP learning collectives, webinars, and coaching call 		6/30/23
Quarter 3 7545.01	Treatment and Recovery Services (07/01/23 – 09/30/23): <ul style="list-style-type: none"> Deliver direct Treatment and Recovery Services to patients utilizing MAT and CM Collect GPRA data as part of Treatment and Recovery service requirements Incentives for patients graduating from one Phase to next Phase 3rd Reporting to AHP (1/1/23 – 3/31/23): <ul style="list-style-type: none"> Submission of program data to UCLA ISAP evaluations team on quarterly basis. Submit data to AHPs online portal Quarterly. Data collection and performance measure will include all requested information per the SOW Participation in AHP learning collectives, webinars, and coaching call 		9/30/23
Quarter 4 7545.01	Treatment and Recovery Services (10/01/23 – 12/31/23): <ul style="list-style-type: none"> Deliver direct Treatment and Recovery Services to patients utilizing MAT and CM Collect GPRA data as part of Treatment and Recovery service requirements Incentives for patients graduating from one Phase to next Phase 4th Reporting to AHP (1/1/23 – 3/31/23): <ul style="list-style-type: none"> Submission of program data to UCLA ISAP evaluations team on quarterly basis. Submit data to AHPs online portal Quarterly. Data collection and performance measure will include all requested information per the SOW Participation in AHP learning collectives, webinars, and coaching call 		12/31/23
Total for 2023			

SOW- Quarterly Deliverables

First Quarter ONLY- **Implementation Plan**. Template will be provided.

Grantees must develop their H&SS Implementation Plan to identify specific objectives, action steps, timelines, assigned personnel, planned outcomes, and internal performance measures. AHP will initiate TTA to grantees for the development of their Implementation Plan within six weeks of the Notice of Award

- 1) **Submit quarterly data to UCLA ISAP data portal**
- 2) **Submit ongoing GPRA evaluations**
- 3) **Submit data to AHPs online portal**
- 4) **Each Quarter 1-2 required H&SS staff members attend mandatory learning collaborative, webinar, and coaching call. = 4 hours or less of time per quarter.**
- 5) **Submit invoice to AHP per deliverables schedule**

Quarterly Deliverables and Invoicing

Please note: To be paid on time, you must submit deliverables and invoices within 15 days after the quarter ends.





Quarterly Deliverables and Invoicing

DELIVERABLES

- Submit quarterly data to UCLA ISAP data portal **(training date to be announced)**.
- Submit ongoing GPRA evaluations **(GPRA training February 15, 12:00 to 1:00 p.m. PT)**.
- Submit data to AHP's online portal **(NEW, in development)**.
- One to two H&SS grantee staff members must attend mandatory Learning Collaborative, webinar, and coaching call each quarter.

INVOICING

- Submit invoice to AHP per deliverables schedule.
- Allowable cost sheet will be provided to you in follow-up email.
- There will be an additional Invoicing webinar Prior to the quarter ends.

Deliverables and Invoicing Schedule

Quarter	Period	Due Date
Quarter 1	01/01/2023 – 03/31/2023	04/15/2023
Quarter 2	04/01/2023 – 06/30/2023	07/15/2023
Quarter 3	07/01/2023 – 09/30/2023	10/15/2023
Quarter 4	10/01/2023 – 12/31/2023	01/15/2024
Quarter 5	01/01/2024 – 03/31/2024	04/15/2024
Quarter 6	04/01/2024 – 06/30/2024	06/30/2024

Please note:

If deliverables and invoices are not submitted by due date, you will not be paid until the following quarter.

Data Collection Deliverables

- AHP is accountable for all expenditure of funds. We must ensure that data is collected from your site(s) to help measure efficacy, effect of services, innovative practice outcomes, service reach or lack thereof, etc.
- AHP's approval of invoices will be contingent on your full compliance with GPRA data submission to Aurrera and program data submission to the UCLA evaluation portal.
- AHP is finalizing the development of an interactive data dashboard where grantees will be able to view and extract their own site's data. Further information will be provided to you in the coming quarters.
 - AHP wants to ensure that the database under development serves your agency, and therefore welcomes your input regarding data variables and analyses of interest but may not be able to accommodate every requests.
- Collectively, we can help demonstrate that your services are making a positive difference for California's most vulnerable patients and communities in need of care.
- Data template will be provided to you from UCLA.



Overview Instructions: Hub and Spoke Subcontractor Quarterly Deliverables Invoice



Invoices are to be completed and submitted to AHP promptly upon completion of deliverables.



Complete the top portion of the invoice with your organization name, address, and phone and email contact information.



Refer to the SOW provided with your Subcontract Agreement, and fill out the invoice grid.



Enter the total of all line items in the "Total Fees" space at the bottom of the grid.



Please be sure to verify your total; an invoice with calculation errors will be returned to the subcontractor for re-submission.



Optional: Please attach a detailed description of all activities completed for the quarterly deliverable.



Sign and date the invoice where indicated. Scan into PDF Format and email the invoice to:
sor3ae@ahpnet.com

Please note: An invoicing call will be held before the quarter ends to review invoicing and additional items.

Next Steps

SAVE THE DATE: Mandatory GPRA webinar, **Wednesday, February 15, 2023, 12:00–1:00 p.m. PT**

SAVE THE DATE: First webinar will be held **March 8, 2023, 11:30–1:00 p.m. PT**

Coming Soon: UCLA ISAP SOR 3 Evaluation Data Portal Webinar

- All 105 Hub and Spoke sites will be grouped by geographic regions to participate in quarterly coaching calls and continue your orientation to the SOR 3 Hub and Spoke System.
- Each site (all 44 Hubs and 61 Spokes) will be assigned a Grantee Liaison (GL) who will be your main point of contact. Your Grantee Liaison will follow up to schedule group calls.
- A Calendar of Events will be distributed within the first quarter and will include webinars, Learning Collaboratives, and coaching call dates and times; please ensure your attendance.
- SOWs will be sent out to all sites in February.

Thank You for Your Time and Attention!

QUESTIONS and CONTACTS

Please submit questions via the Q&A box today. An FAQ document will be sent to all H&SS grantees within the coming week.

Additional questions? Send to: sor3ae@ahpnet.com

Contacts:

Geoffrey Henderson, Project Director: ghenderson@ahpnet.com

Susan DeSalvo, Deputy Project Director: sdesalvo@ahpnet.com

Linda McCarthy, Accounts Payable: lmccarthy@ahpnet.com